



MINISTERUL MEDIULUI,
APELOR ȘI PĂDURILOR



UNIVERSITATEA BABEȘ-BOLYAI
BABEȘ-BOLYAI TUDOMÁNYEGYETEM
BABEȘ-BOLYAI UNIVERSITÄT
BABEȘ-BOLYAI UNIVERSITY
TRADITIO ET EXCELLENTIA

Iceland 
Liechtenstein 
Norway grants 

Restoration of wetlands and peatlands in the North-West Region (NWPEAT)

Lecturer **Răzvan-Horațiu BĂȚINAȘ**, PhD

Faculty of Geography

Department of Physical and Technical Geography

Working together for a **green**, **competitive** and **inclusive** Europe

www.eeagrantsmediu.ro





MINISTERUL MEDIULUI,
APELOR ȘI PĂDURILOR



UNIVERSITATEA BABEȘ-BOLYAI
BABEȘ-BOLYAI TUDOMÁNYEGYETEM
BABEȘ-BOLYAI UNIVERSITÄT
BABEȘ-BOLYAI UNIVERSITY
TRADITIO ET EXCELLENTIA

Iceland
Liechtenstein
Norway grants
grants

Project Promoter: Babeș-Bolyai University
Partner 1: Norwegian Institute for Nature Research

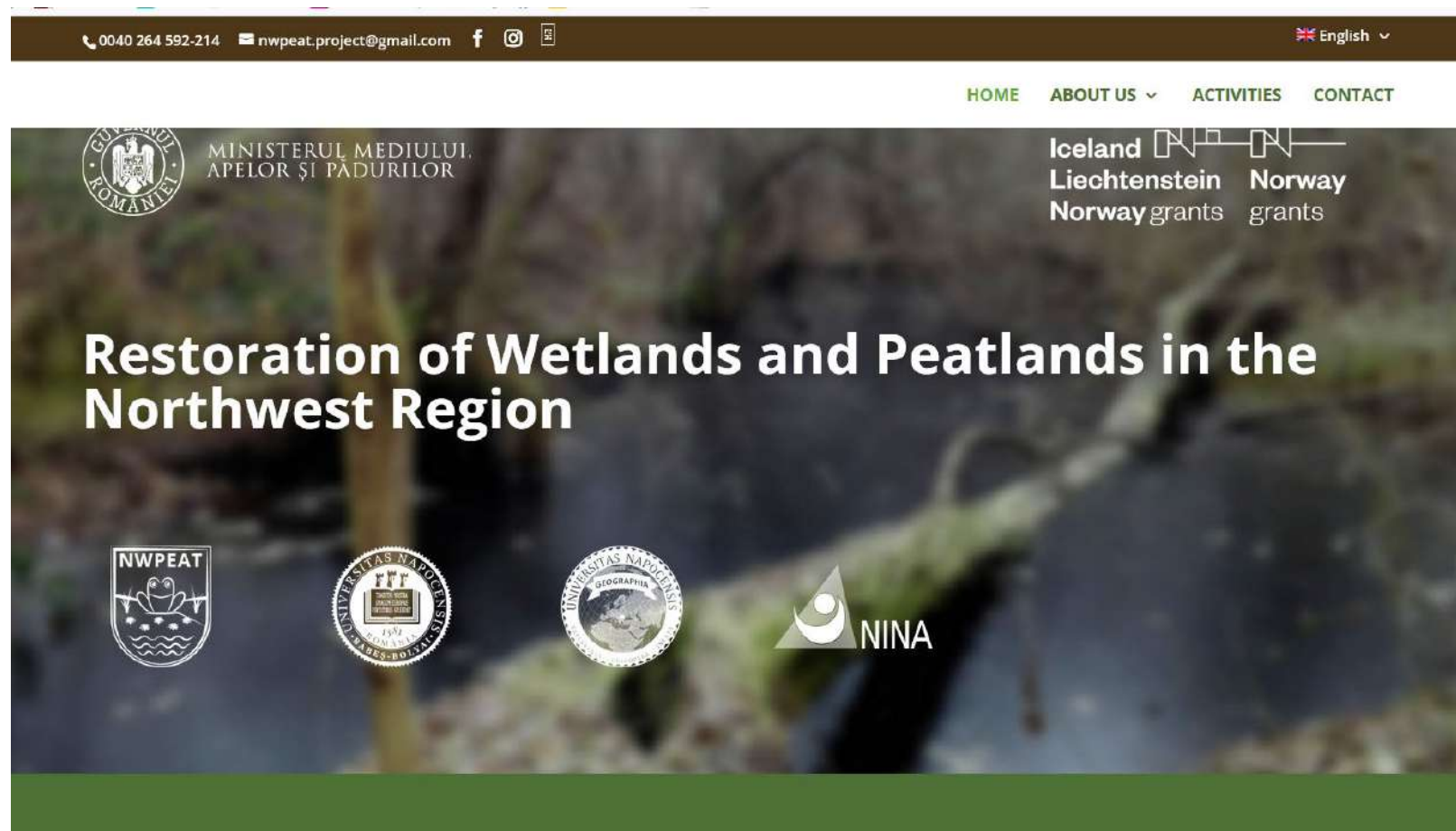
Project title: „Restoration of wetlands and peatlands in the North-West Region” (NWPEAT)

Project duration: 16.12.2021 – 30.04.2024

Financing source: grant from Iceland, Liechtenstein and Norway, the RO-Environment Program "Environment, Adaptation to Climate Change and Ecosystems", Call for proposals Restoration of wetlands and peatlands

Programme Operator: Ministry of Environment, Water and Forests

Budget: 3.811.259,25 lei (769.982,47 Euro)



Working together for a **green**, **competitive** and **inclusive** Europe

www.eeagrantsmediu.ro



This is how it started ...

1 RO-Environment Program "Environment, Adaptation to Climate Change and Ecosystems", Call for proposals Restoration of wetlands and peatlands

2 Integrated Study on the Contribution of Ecosystems in the protected Natura 2000 areas: Pricop-Huta-Certeze and Tisa Superioara to the Sustainable Development of Local Communities (SIENPHCTS)

3 Restoration guide of degraded peatlands in Romania

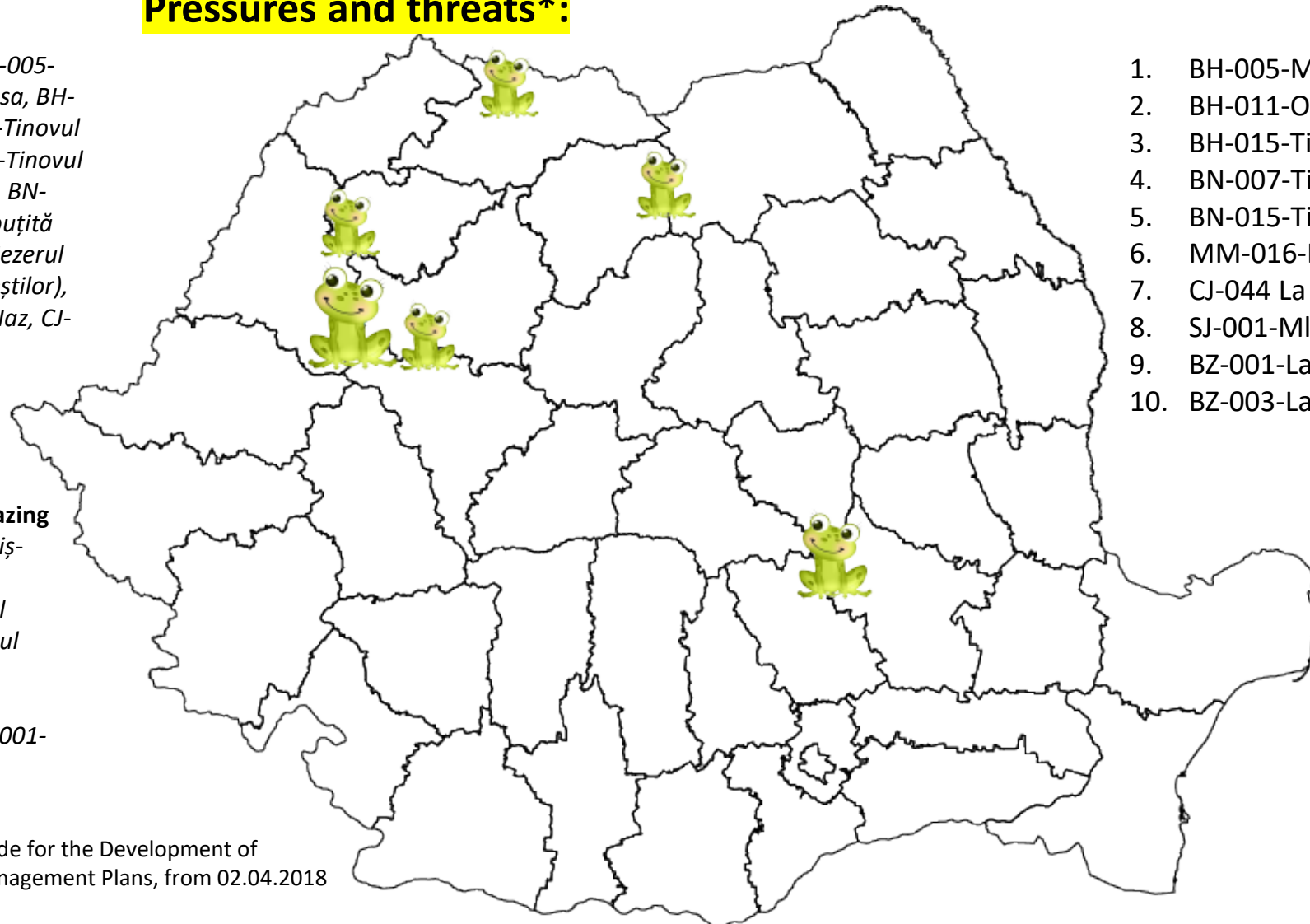
4 Extensive ecological restoration projects involving NINA experts



Pressures and threats*:

- **J02.01 – drainage** (BH-005-Mlaștina Padiș-Bălileasa, BH-011-Onceasa, BH-015-Tinovul de la Ic Ponor, BN-007-Tinovul Câmpelilor (Grădinița), BN-015-Tinovul Țesna Împutită (Grădinița), MM-016-lezerul Mare (Tinovul Hărniceștilor), SJ-001-Mlaștina de la laz, CJ-044 La Poduri)

- **A04.01 – intensive grazing** (BH-005-Mlaștina Padiș-Bălileasa, BH-011-Onceasa, BZ-003-Lacul Manta, MM-016-lezerul Mare (Tinovul Hărniceștilor), SJ-001-Mlaștina de la laz, BZ-001-Lacul Sec)



1. BH-005-Mlaștina Padiș-Bălileasa
2. BH-011-Onceasa
3. BH-015-Tinovul de la Ic Ponor
4. BN-007-Tinovul Câmpelilor (Grădinița)
5. BN-015-Tinovul Țesna Împutită (Grădinița)
6. MM-016-lezerul Mare (Tinovul Hărniceștilor)
7. CJ-044 La Poduri
8. SJ-001-Mlaștina de la laz
9. BZ-001-Lacul Sec
10. BZ-003-Lacul Manta

*In accordance with the Guide for the Development of Protected Natural Areas Management Plans, from 02.04.2018

General objective: 10 wetland restorations in the North-West Region



Specific objectives:



improving the ecological status of habitats associated with the North-West Region restoration schemes



raising the awareness of the target group on the peatland conservation



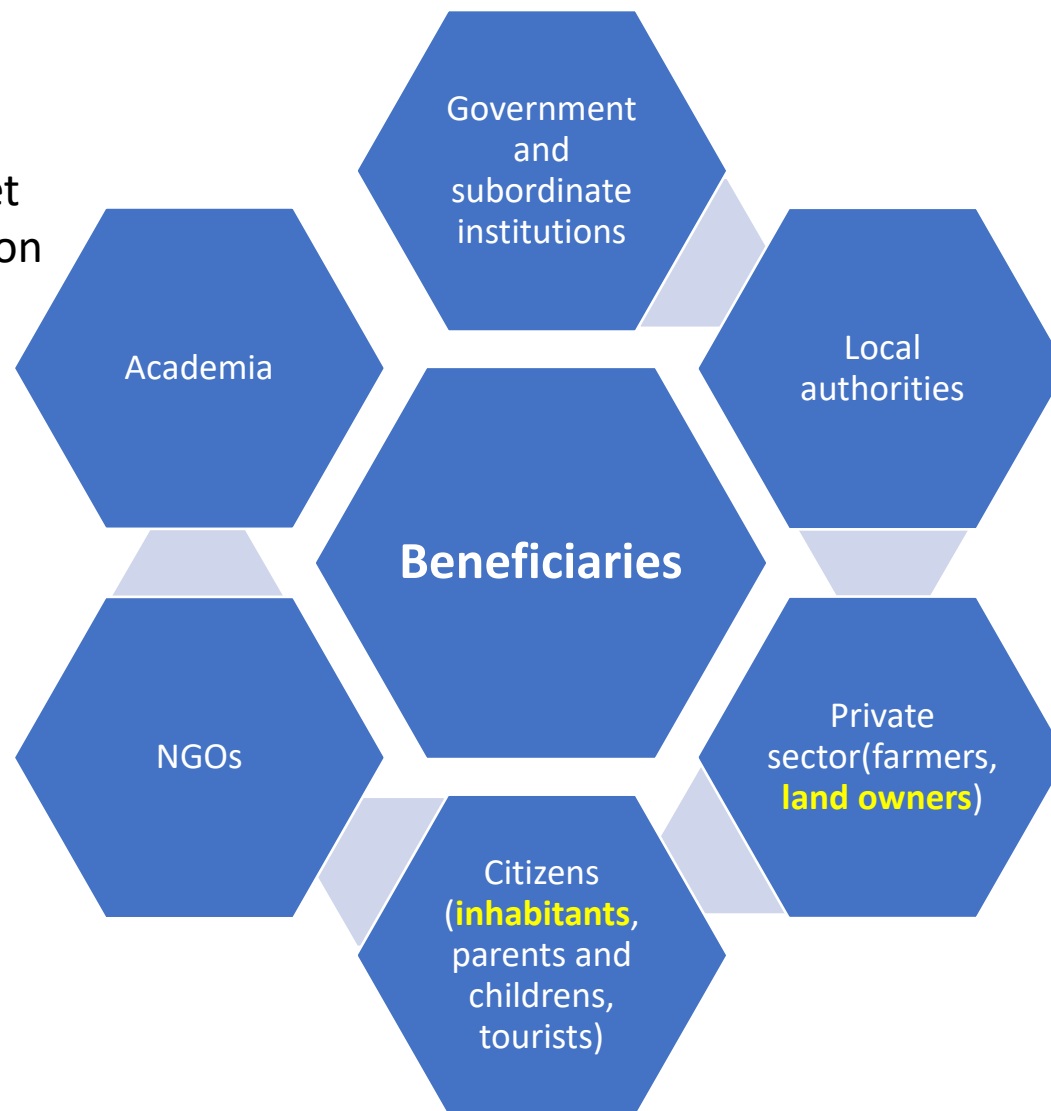
improving geographical information tools for decision-makers (local authorities)



strengthening the partnership between Romania and Norway

Secondary objective:

raising the awareness of the target group on the peatland conservation in the North-West Region



Working together for a **green**, **competitive** and **inclusive** Europe

www.eeagrantsmediu.ro





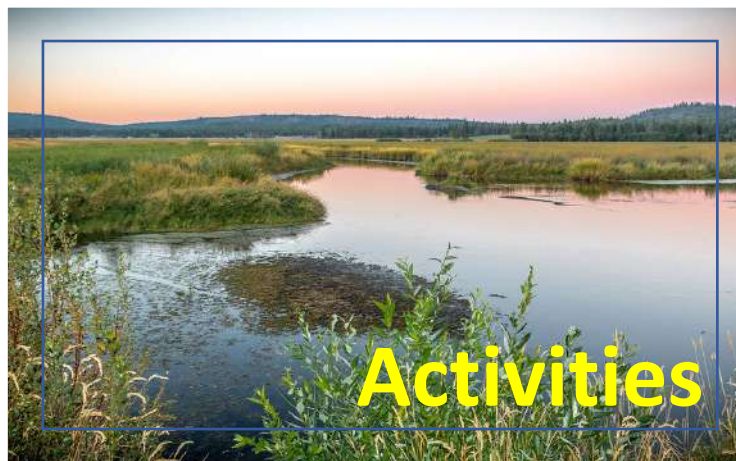
Activity A.5.
Carrying out
information
and publicity
activities

2024



Months 9-25

Activity A.4. Carrying out
awareness actions of the
target group on the
conservation of peatland
ecosystems



Months 1-28



2022

Activity A1. Assessment of
peatland ecosystems and
wetland ecosystem services

Months 1-6



Months 7-12



Activity A.3.
Monitoring of
restoration works for
wetlands in the North-
West Region

Months 9-25

2023



Activity A.2.
Implementation of
restoration works for
wetlands in the North-
West Region



Results



**10 wetlands/
peatlands restored**

Studies (3 scientific studies: *biodiversity study, Hydrogeology-hydrology study, sustainable tourism development study*; 10 Environmental impact assessment studies / 9 Appropriate assessment studies)

1 GIS database

Soft restoration works

(3 thematic trails, 10 billboards)

Advertising and publicity materials

(kick-of-conference, closing conference, workshops, press articles/releases, guide for wetlands restoration wetland, webpage, scientific articles, storybook for children, digital brochures etc.)

Activity A1. The assessment of peatland ecosystems and wetland ecosystem services



7 joint team meetings
23 field trips and data collection
(April-August 2022)



3 assessment studies on wetlands
*(v.2): biodiversity study, hydrology-
hydrogeology study, sustainable
tourism development study*
10 biodiversity sheets
10 water quality sheets



Activity A2. Implementation of restoration works for wetlands in the North-West Region

- signing the Secondary Additional Act of the NWPEAT contract (due to new and optimal restoration works sustained by field survey results)
- obtaining regulatory acts in the field of environment
- implementation of restoration works

Activity A4. Carrying out awareness-raising actions for the target group on the conservation of peatland ecosystems



First field survey with the Programme Operator



18.10.2022, La Poduri

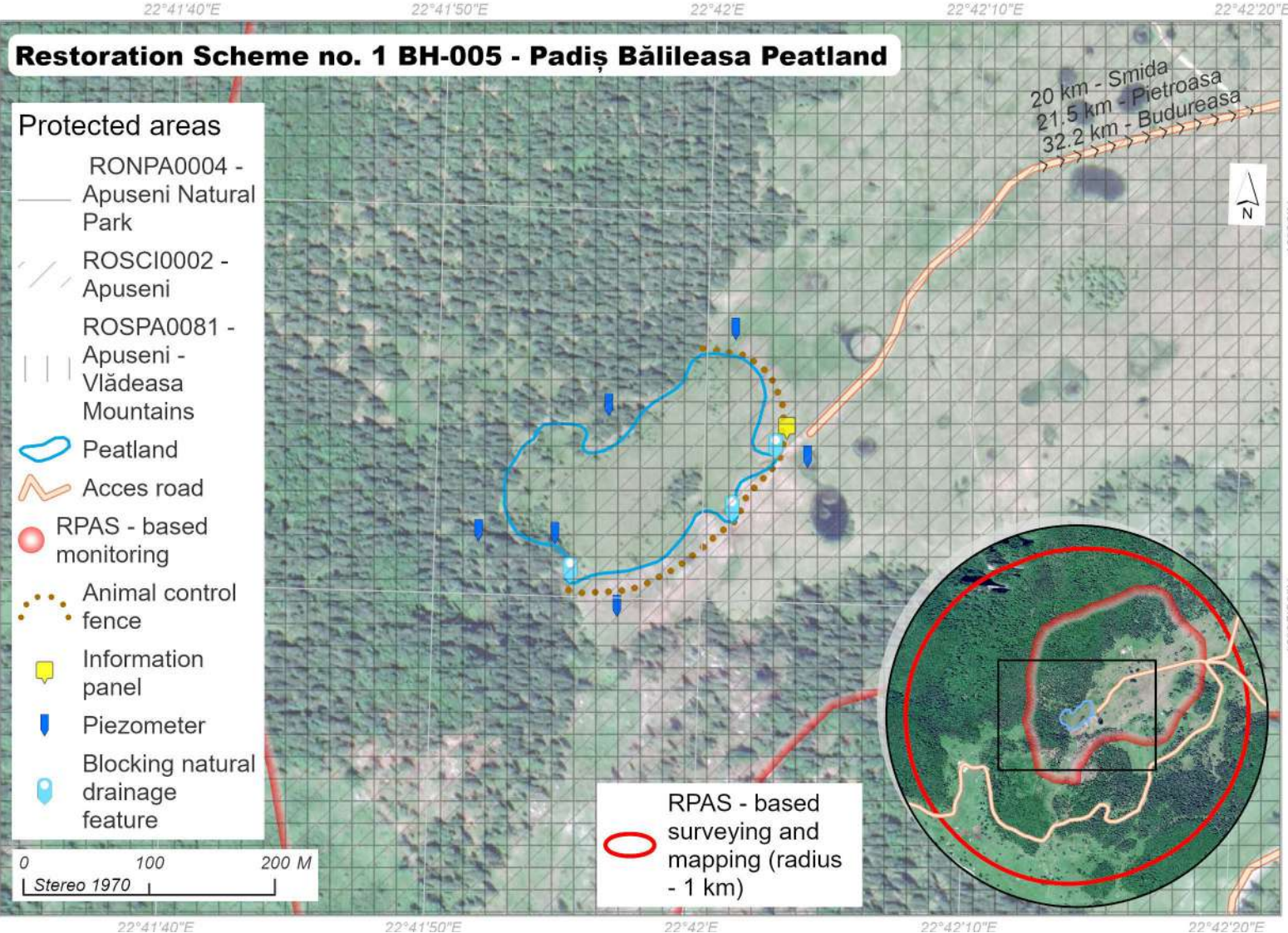
Working together for a **green**, **competitive** and **inclusive** Europe

www.eeagrantsmediu.ro



Restoration Scheme no. 1 BH-005 - Padiș Bălileasa Peatland

- Protected areas**
- RONPA0004 - Apuseni Natural Park
 - ROSCI0002 - Apuseni
 - ROSPA0081 - Apuseni - Vlădeasa Mountains
- Peatland**
- Acces road**
- RPAS - based monitoring**
- Animal control fence
 - Information panel
 - Piezometer
 - Blocking natural drainage feature



2 field surveys

pressures: overgrazing, logging
habitats: Active raised bogs (7110*), Transition mires and quaking bogs (7140), Bog woodland (91D0*)
Karst area valorised through tourism routes
 Some publicity materials promoted by APN Apuseni

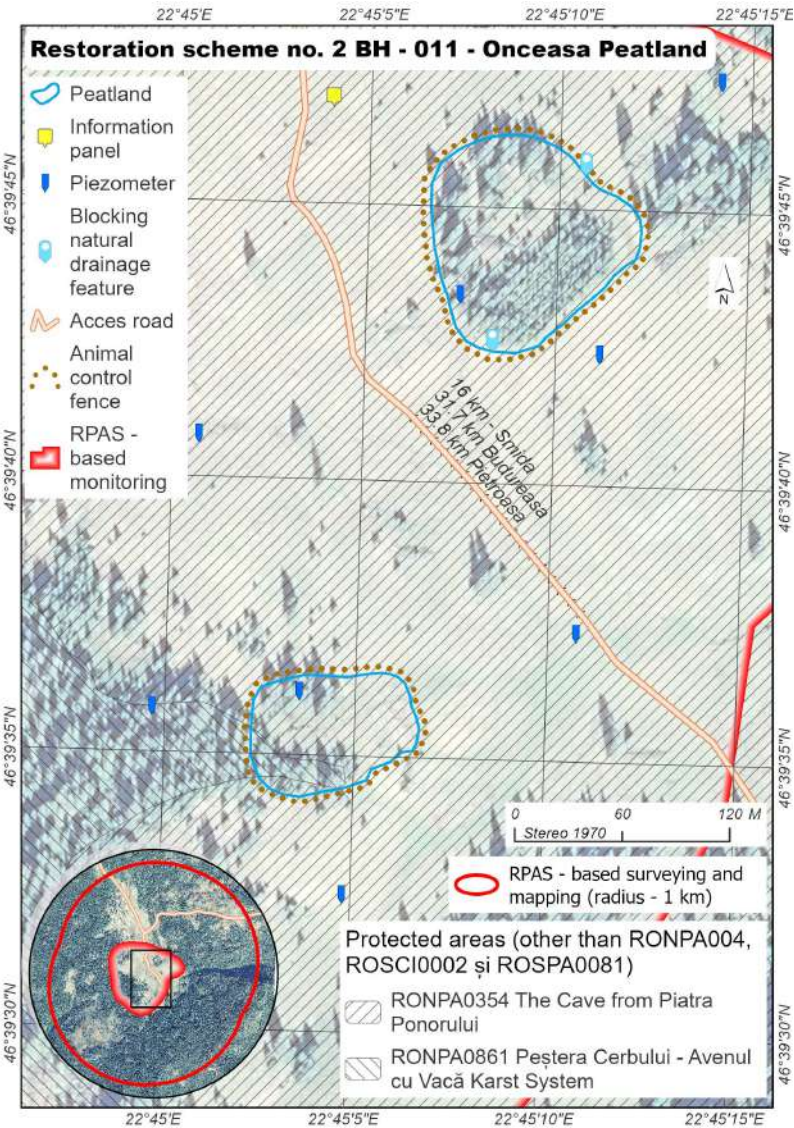


Mesotrophic peatland

Working together for a **green, competitive** and **inclusive** Europe

www.eeagrantsmediu.ro





Oligotrophic-mesotrophic peatland

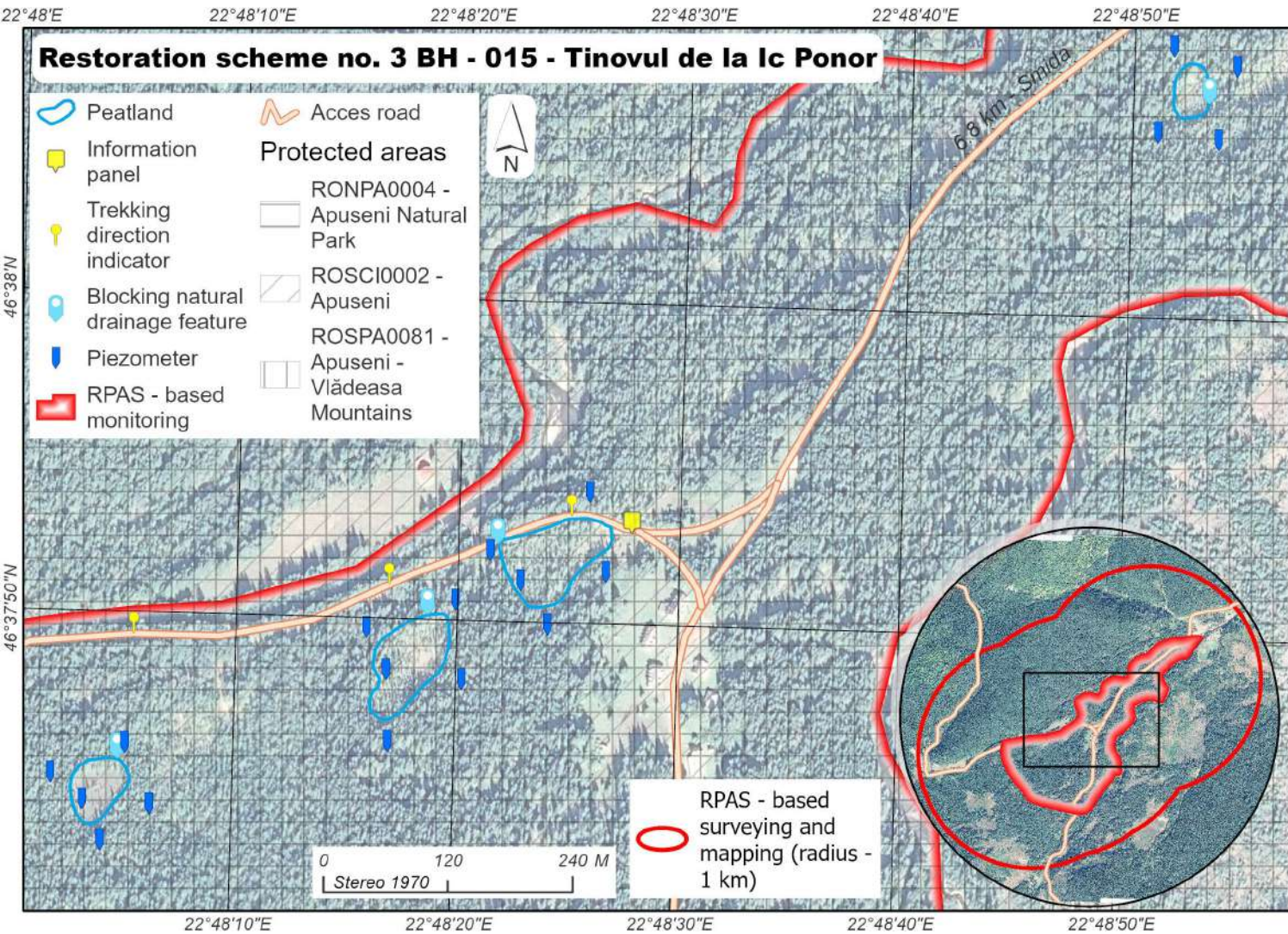
1 field survey

pressures: drainage, overgrazing

habitats: Active raised bogs (7110*), Transition mires and quaking bogs (7140), Alpine rivers and the herbaceous vegetation along their banks (3220)

Karst area valorised through tourism routes





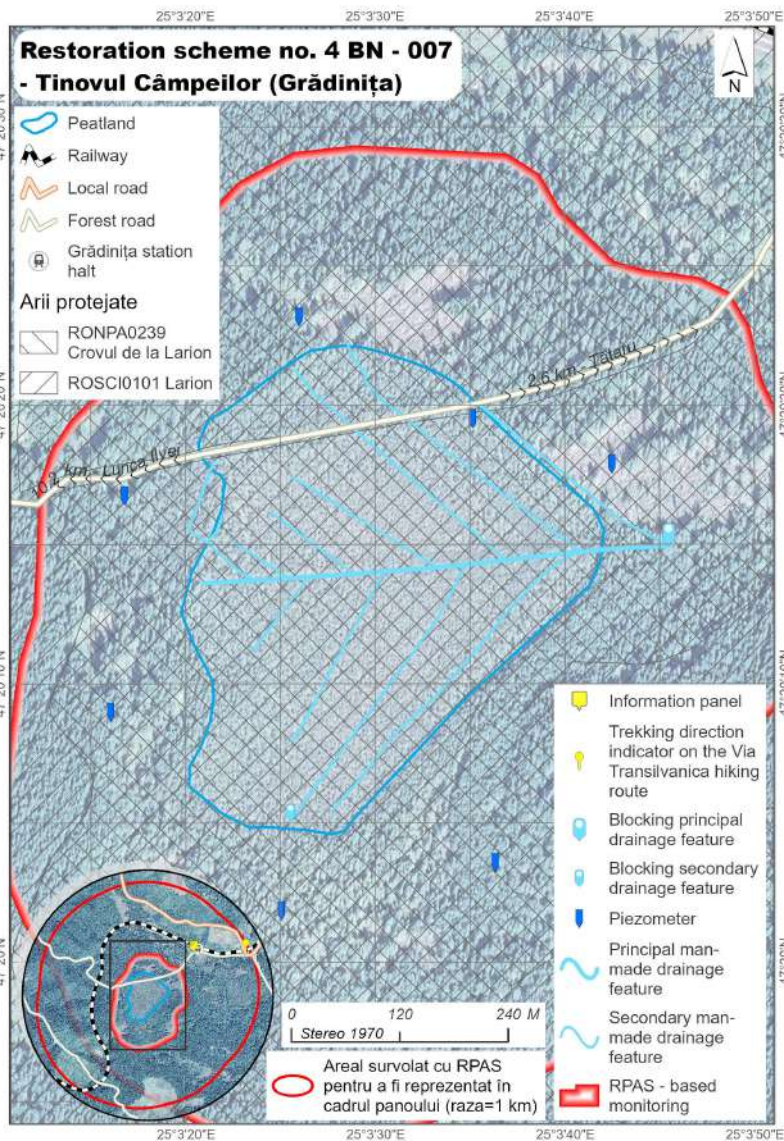
4 field surveys

pressures: //

habitats: Active raised bogs (7110*), Transition mires and quaking bogs (7140), Bog woodland (91D0*)

Karst area valorised through tourism routes

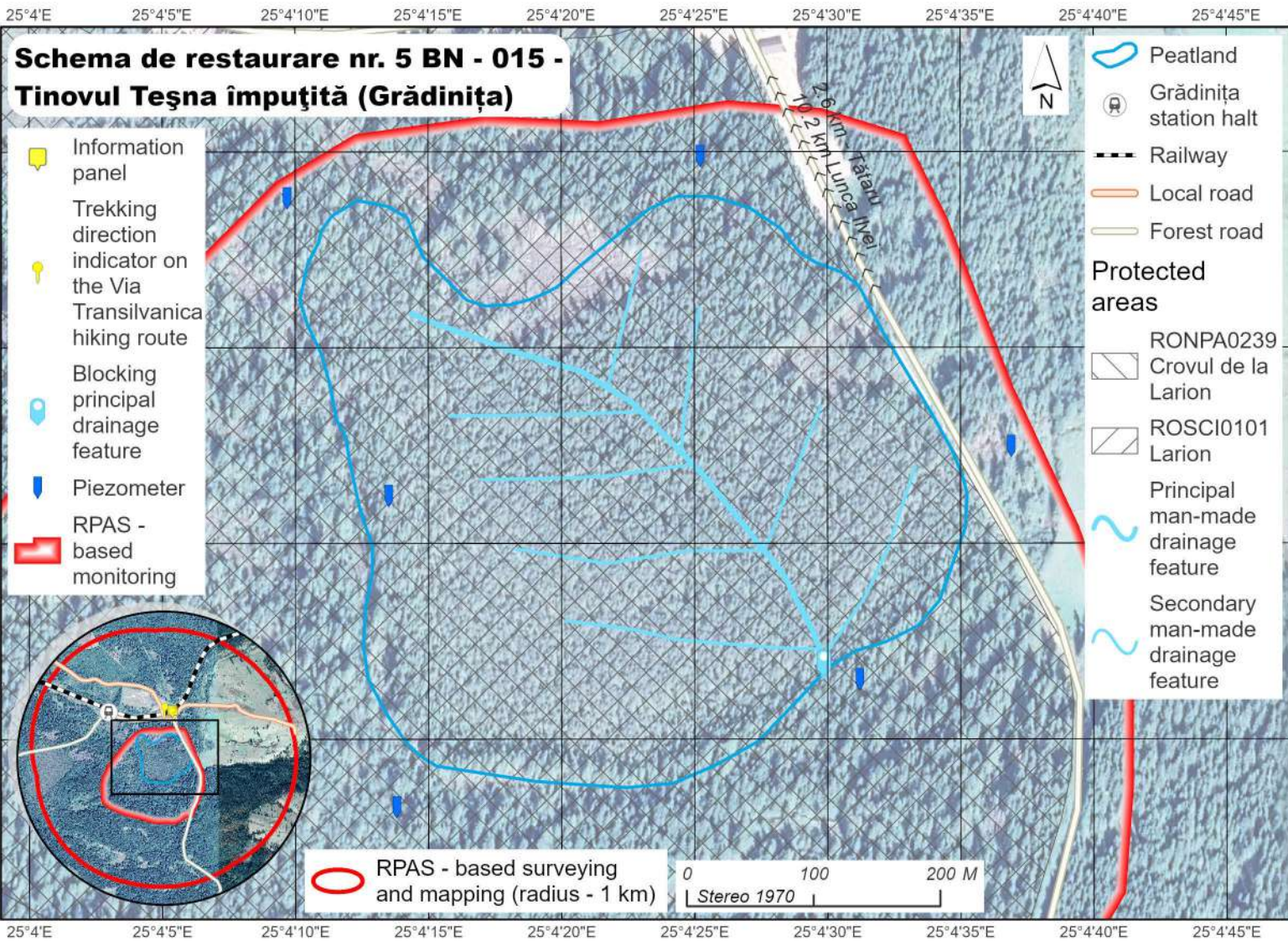




2 field surveys
pressures: drainage
habitats: Bog woodland (91D0*)

*Specific rural landscapes
 from Țara Dornelor
 Vicinity of Via Transilvanica*





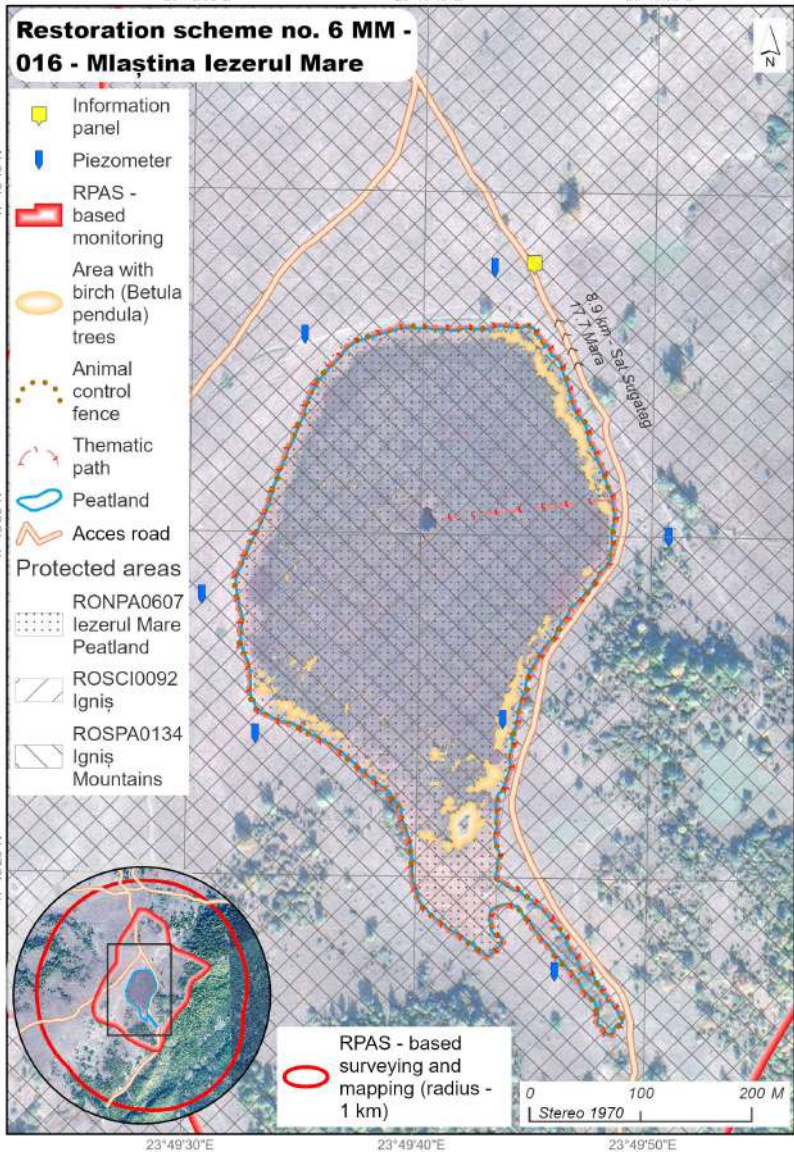
2 field surveys
pressures: drainage
habitats: Bog woodland
(91D0*)

*Specific rural landscapes
from Țara Dornelor
Vicinity of Via Transilvanica*



Mesotrophic peatland





3 field surveys

pressures: grazing

habitats: Active raised bogs (7110*)

Tourism digital products (promoted by Greenway Tour)

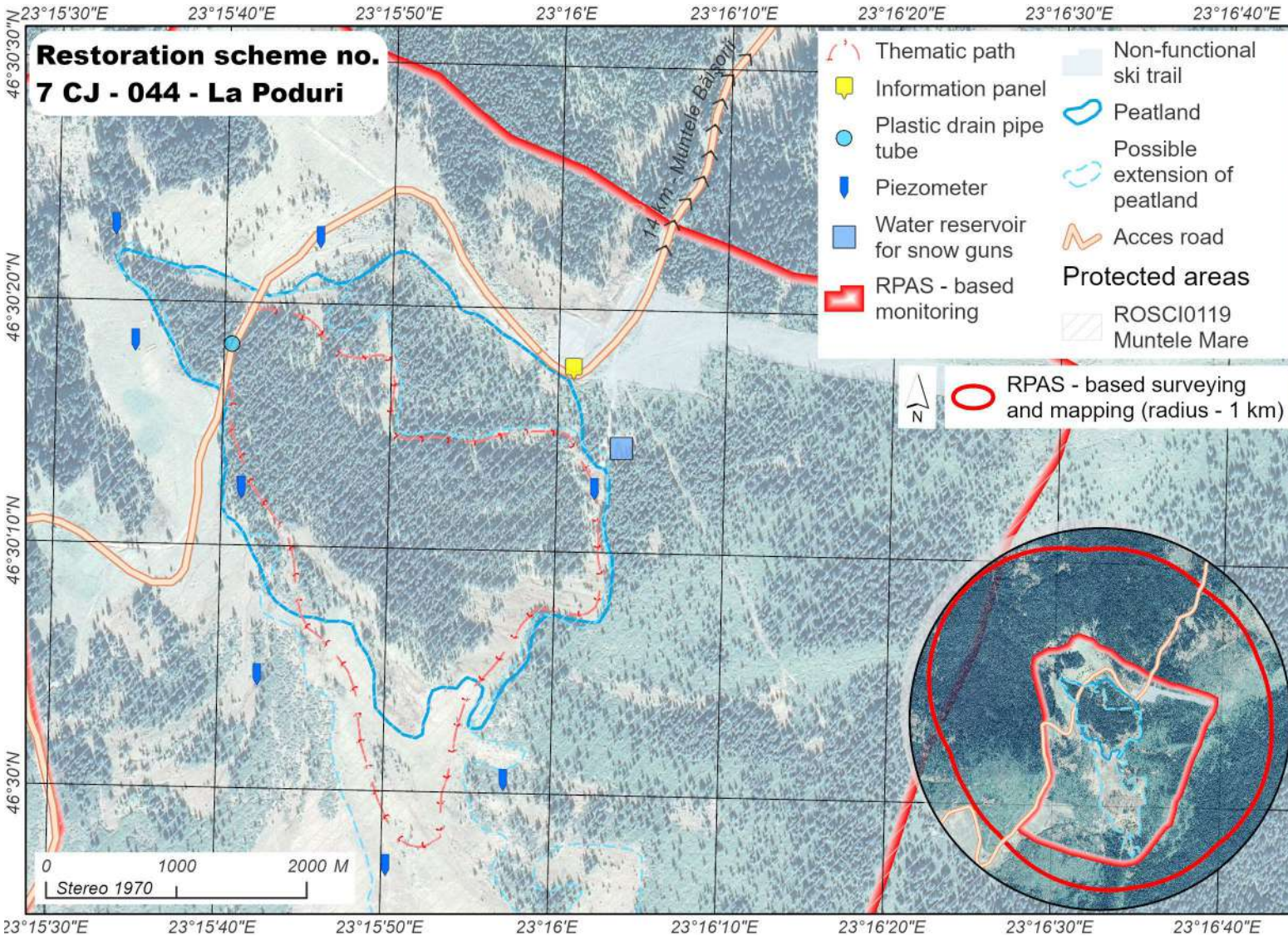
Oligophic peatland



Working together for a green, competitive and inclusive Europe

www.eeagrantsmediu.ro





2 field surveys

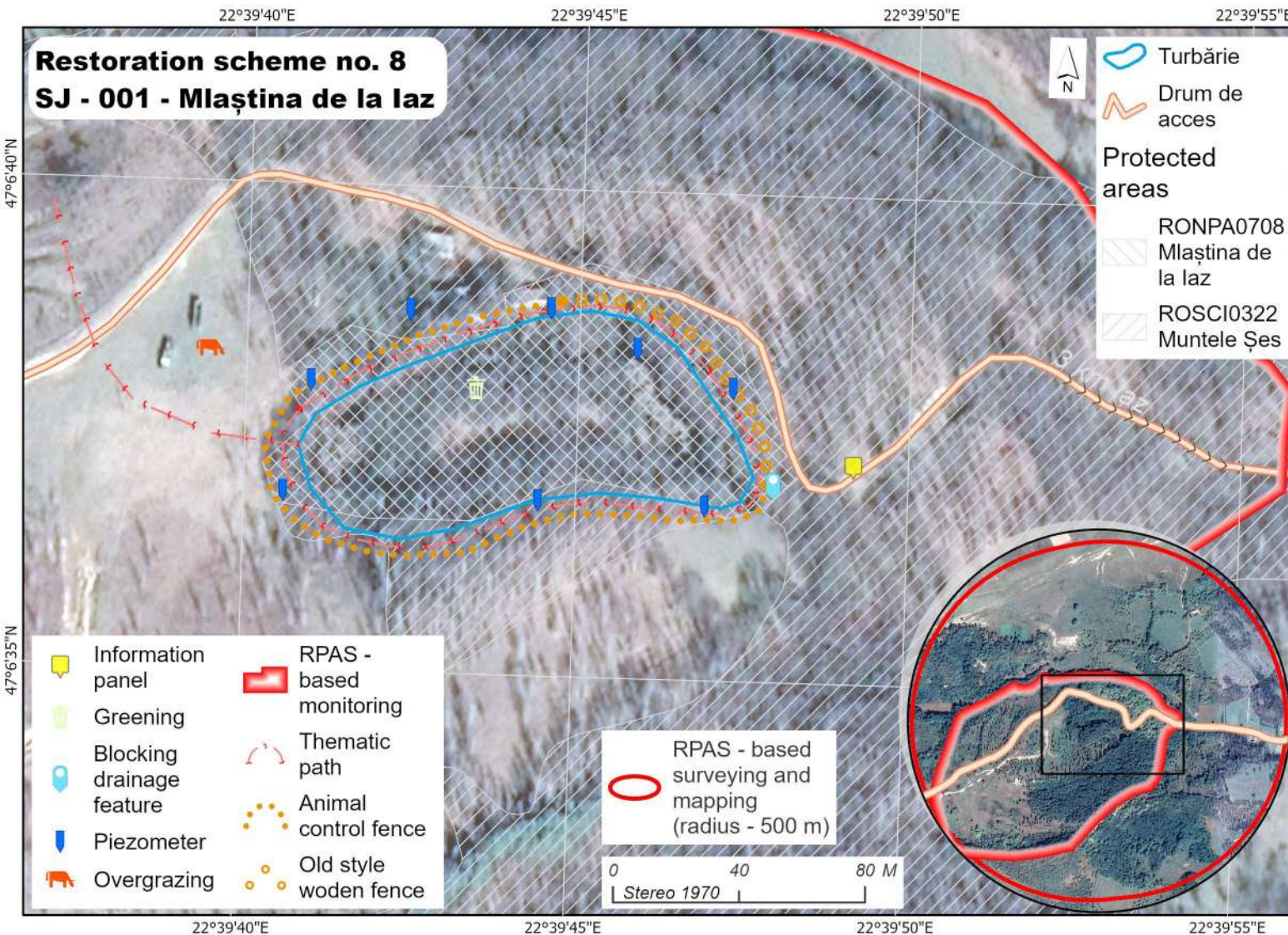
pressures: drainage

habitats: Active raised bogs (7110*), Transition mires and quaking bogs (7140), Alpine rivers and the herbaceous vegetation along their banks (3220), Bog woodland (91D0*), Acidophilous Picea forests of the montane to alpine levels (9410), Alpine and Boreal heaths (4060), Mountain hay meadows (6520)

Tourism routes associated to Muntele Mare-Băișoara



Mesotrophic peatland



3 field surveys

pressure: overgrazing

habitats: Alkaline fens (7230), Alluvial forests with *Alnus glutinosa* and *Fraxinus excelsior* (91E0*)

Digital tourism promotion for this swamp

Vernacular landscape in Iaz

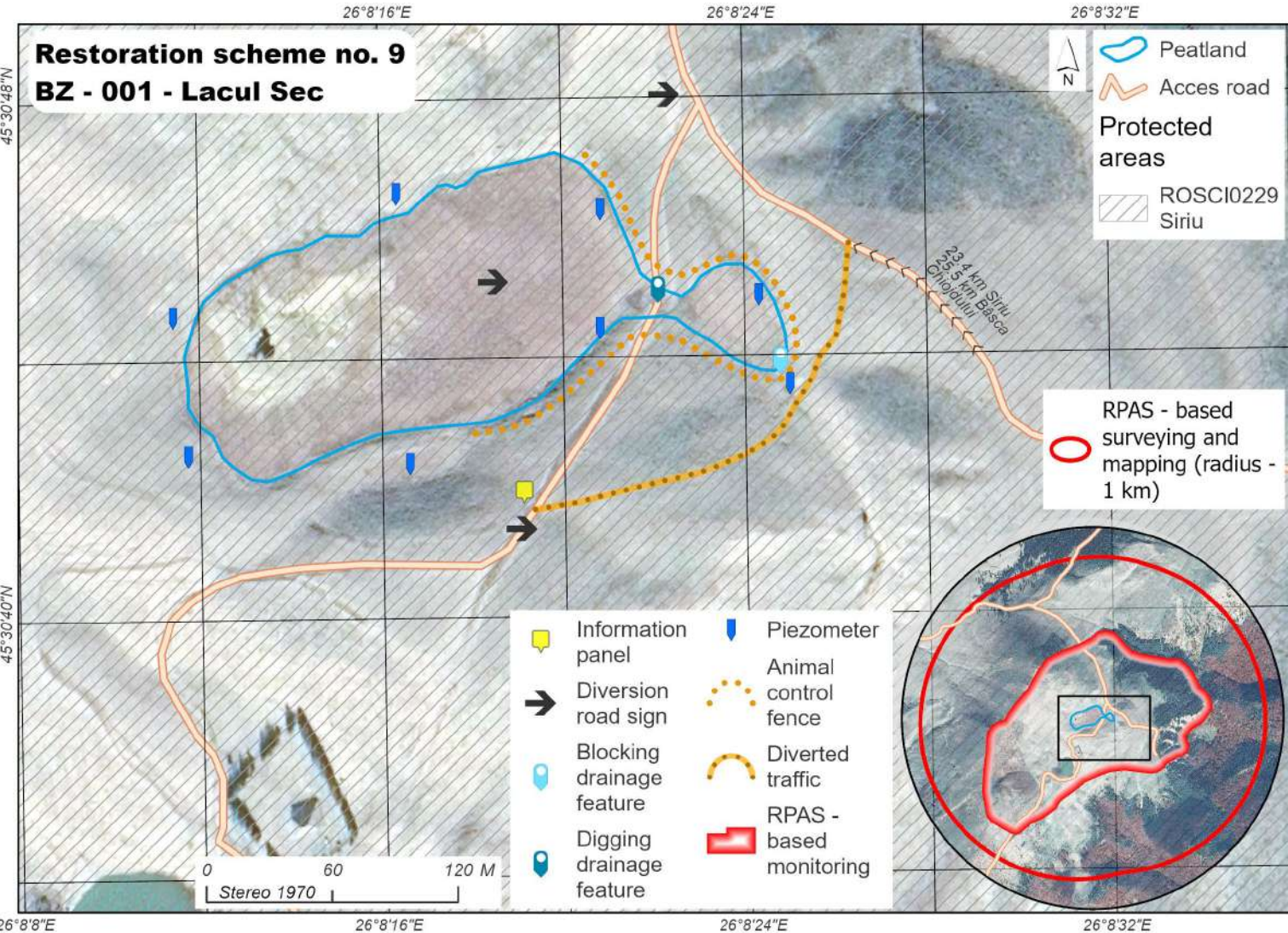


Eutrophic peatland

Working together for a green, competitive and inclusive Europe

www.eeagrantsmediu.ro





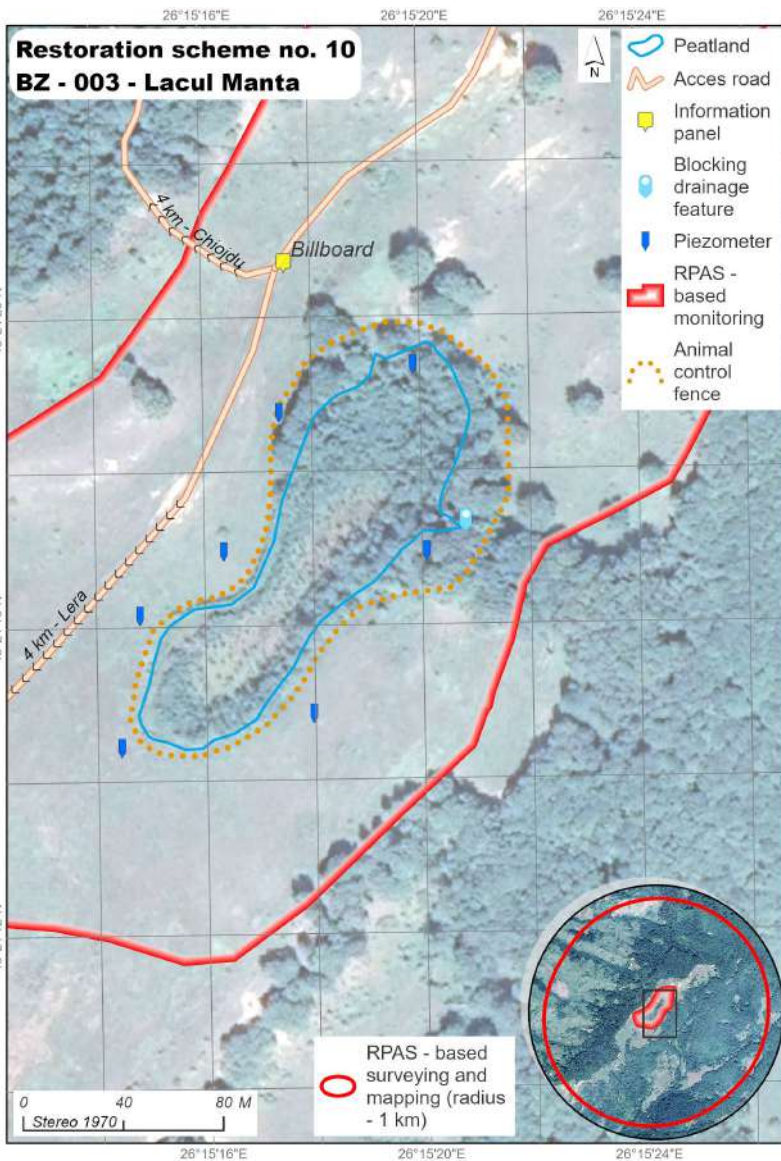
2 field surveys

pressures: overgrazing, presence of the road
habitats: Active raised bogs (7110*), Degraded raised bogs still capable of natural regeneration (7120), Transition mires and quaking bogs (7140), Mountain hay meadows (6520)

Tourism routes associated to Siriu



Mesotrophic peatland



Mesotrophic peatland

2 field surveys

pressure: drainage

habitats: Active raised bogs (7110*), Alluvial forests with *Alnus glutinosa* and *Fraxinus excelsior* (91E0*)

Tourism routes associated to Siriu



Băileasa



Onceasa



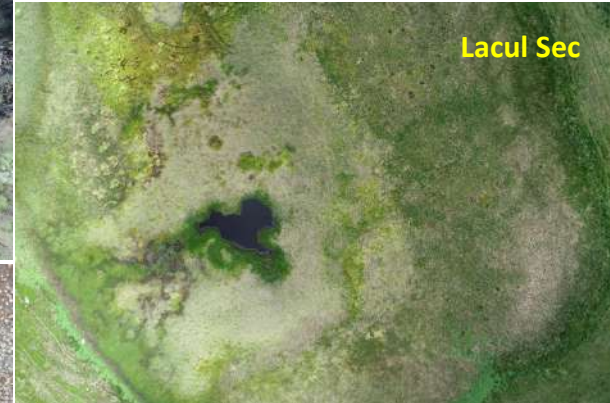
Ic Ponor



Mlaștina de la Iaz



Iezerul Mare



Lacul Sec



Lacul Manta

Innovation aspects

Activity A3. Monitoring of restoration works for wetlands in the North-West Region



- geo-scanning procedure
- The evaluation of the water budget monitored by means of piezometers
- Non-invasive wetland monitoring will be carried out using an RTK and/or PPK drone with RGB, multispectral and thermal sensors

monitoring and post-monitoring of restoration works

Working together for a green, competitive and inclusive Europe

www.eeagrantsmediu.ro



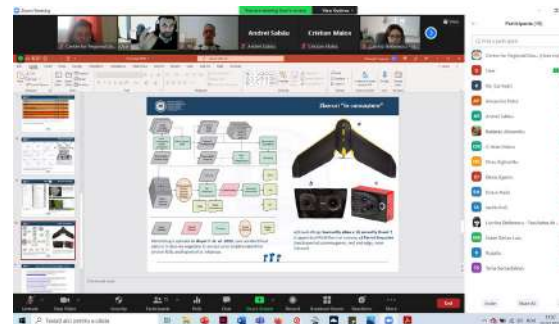
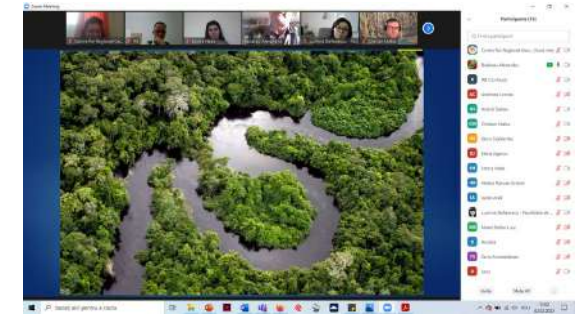
Activity A5. Carrying out information and publicity activities

World Wetlands Day Workshop

02.02.2022 (online event)



Objective: to raise public awareness of the importance and impact of wetlands





MINISTERUL MEDIULUI,
APELOR ȘI PĂDURILOR



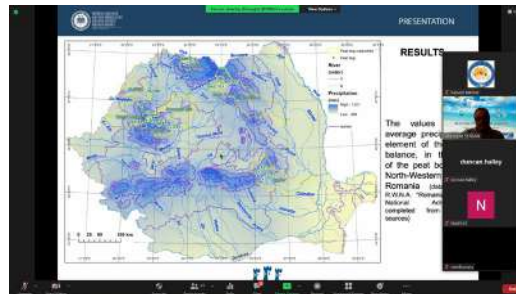
UNIVERSITATEA BABEȘ-BOLYAI
BABEȘ-BOLYAI TUDOMÁNYEGYETEM
BABEȘ-BOLYAI UNIVERSITÄT
BABEȘ-BOLYAI UNIVERSITY
TRADITIO ET EXCELLENTIA

Iceland
Liechtenstein
Norway grants

Activity A5. Carrying out information and publicity activities

NWPEAT Kick-off conference

25.03.2022 (hybrid event)



MINISTERUL MEDIULUI,
APELOR ȘI PĂDURILOR

UNIVERSITATEA BABEȘ-BOLYAI
BABEȘ-BOLYAI TUDOMÁNYEGYETEM
BABEȘ-BOLYAI UNIVERSITÄT
BABEȘ-BOLYAI UNIVERSITY

NINA
Norwegian Institute for Nature Research

NWPEAT

Iceland
Liechtenstein
Norway grants

CONFERINȚA DE DESCHIDERE A PROIECTULUI

Restaurarea zonelor umede și turbăriilor din Regiunea de Nord-Vest (NWPEAT)

25 Martie 2022, orele 9:00 - 12:00

Locație: Facultatea de Știința și Ingineria Mediului
Universitatea Babeș-Bolyai
Str. Fântânele, nr. 30, Cluj-Napoca, România

Working together for a green, competitive and inclusive Europe

www.eeagrantsmediu.ro

Acest proiect este finanțat prin Programul „Mediu, adaptare la schimbările climatice și ecosisteme” (RO-Mediu), conform Mecanismului Financiar al Spațiului Economic European SEE 2014-2021.

Working together for a green, competitive and inclusive Europe



Activity A5. Carrying out information and publicity activities

NWPEAT billboard at the Faculty of Geography

28.09.2022

The billboard features a central image of a wetland landscape with a stream and trees. The text is arranged in a structured layout with logos at the top and bottom.

Restaurarea zonelor umede și a turbărilor din Regiunea de Nord-Vest

Acest proiect este finanțat prin Programul „Mediu, adaptare la schimbările climatice și ecosisteme” (RO-Mediu), conform Mecanismului Financiar al Spațiului Economic European SEE 2014-2021
Valoarea totală a proiectului: 3.811.259,25 lei (769.982,47 EURO), fiind finanțată în totalitate prin fonduri nerambursabile din MF-SEE (85%) și bugetul național (15%).
Termenul de finalizare al proiectului este 29 februarie 2024.

Working together for a **green, competitive** and **inclusive** Europe
www.eeagrantsmediu.ro



**Activity A5. Carrying out
information and
publicity activities**

**2022 European Researchers' Night
30.09.2022**



Activity A5. Carrying out information and publicity activities

The screenshot shows a web interface for the EEA & Norway Grants Library. At the top, there are navigation menus for 'Assets' and 'Collections', a search bar containing 'Assets, folders, and collections', and a user profile icon labeled 'AP'. Below the navigation, the page title is 'Funding Periods'. On the left, a 'FILTERS' sidebar is visible with a search input containing 'nwpeat' and several expandable categories: Country, Funding period, Topic, Programmes, Programme code, Project, Asset type, and Keywords. The main content area displays a grid of 10 asset cards. Each card features a thumbnail image, a star icon, an information icon, and a three-dot menu icon. The first five cards are titled 'NWPEAT - Tinovul Oncea...' and 'NWPEAT - Tinovul Ic Ponor' with their respective IDs and file sizes (e.g., 'JPG 4 MB | ID 19698'). The remaining five cards show various nature-related images without text labels.

EEA & Norway
Grants Library





MINISTERUL MEDIULUI,
APELOR ȘI PĂDURILOR



UNIVERSITATEA BABEȘ-BOLYAI
BABEȘ-BOLYAI TUDOMÁNYEGYETEM
BABEȘ-BOLYAI UNIVERSITÁT
BABEȘ-BOLYAI UNIVERSITY
TRADITIO ET EXCELLENTIA

Iceland
Liechtenstein
Norway grants



Follow us on: <https://nwpeat.granturi.ubbcluj.ro/en>

Contact information

Babeș-Bolyai University, Faculty of Geography
Department of Physical and Technical Geography

Address: Str. 5-7 Clinicilor St., Cluj-Napoca, 400006, Romania

Tel: 0040 264 592-214

Fax: 0040 264 597-988

Email: nwpeat.project@gmail.com

Contact person:

Lecturer PhD. Răzvan-Horațiu Bătinaș – project manager

Presence on social media platforms



Working together for a **green**, **competitive** and **inclusive** Europe

www.eeagrantsmediu.ro

